

EN Motion detector

theLuxa S150 WH 1010500

theLuxa S150 BK 1010501

theLuxa S180 WH 1010505

theLuxa S180 BK 1010506



1. Essential safety instructions



WARNING

Danger of death through electric shock or fire!

➤ Installation should only be carried out by a professional electrician!

- The device conforms with EN 60669-2-1 when correctly installed
- IP 55 in accordance with EN 60529

Designated use

- Motion detector for automatic lighting control dependent on presence and brightness
- Suitable for installation on external walls
- Suitable for entrances, garages, gardens, corridors, parks, etc.
- Only intended for installation outside of arm's reach

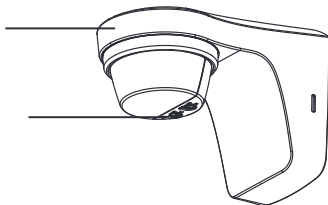
Disposal

Dispose of the motion detector in an environmentally sound manner (electronic waste)

2. Description

Motion detector with sensor head

2 potentiometers for setting time (min) and brightness (lux)



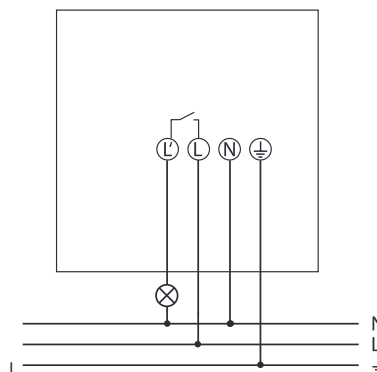
3. Connection

WARNING

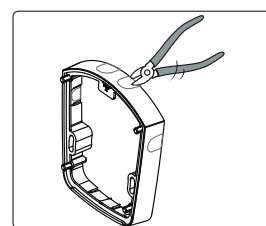
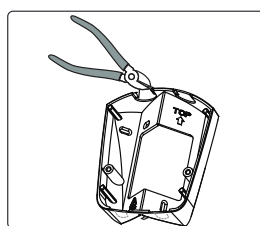
Danger of death through electric shock!

- Disconnect power source!
- Cover or shield any adjacent live components.
- Ensure device cannot be switched on again!
- Check power supply is disconnected!

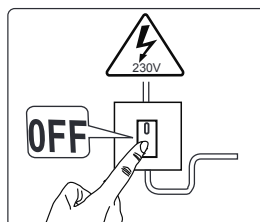
➤ Earth and bypass!



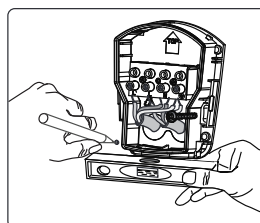
4. Installation



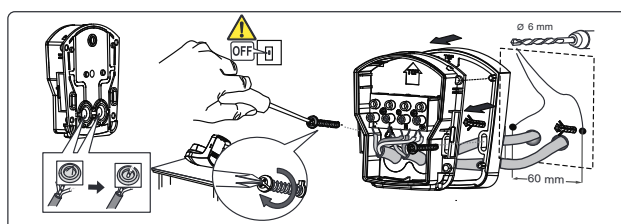
➤ If applicable, use optional corner bracket (9070902, 9070903) or spacer frame (9070906, 9070907) for flexible installation as well as cable insertion from side or top/bottom.



➤ Disconnect power source.



- Make marks for the holes on the wall (with enclosed drill template/base).
- Drill holes.



➤ Feed cable through the seal of the base.